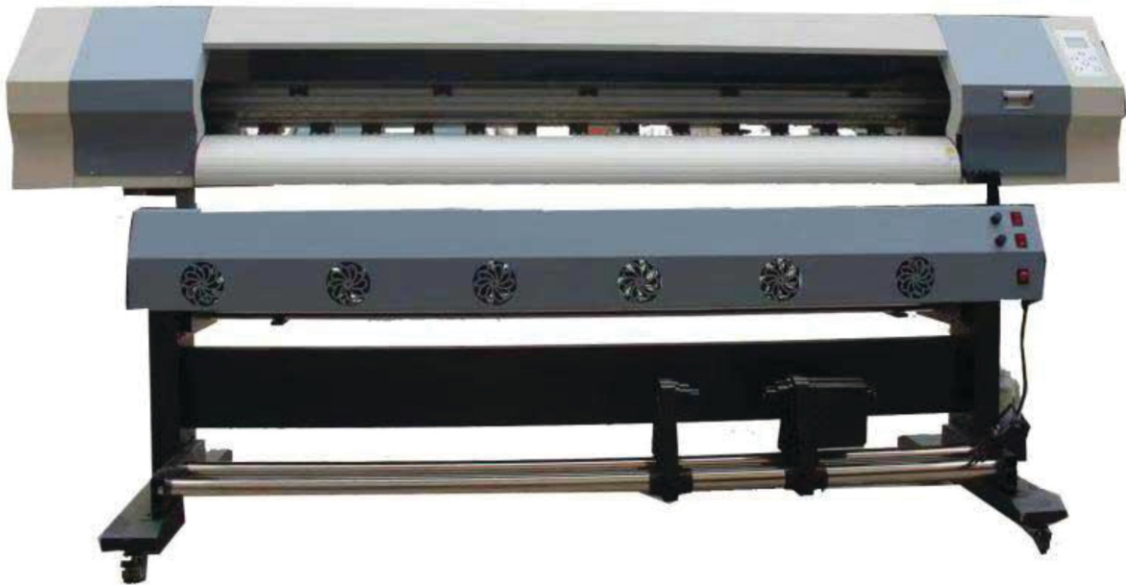


SANNI XP600 ECO SOLVENT



Rrint head		DX5/DX7/XP600/5113
Number of printhead(PC)		2
Maximum print width(mm)		2500
Color		CMYK 4color/CMYK LC LM 6color
Compatible ink		Eco-solvent ink/Water-based ink/Sublimation ink etc
Water-based		PP/Backlit film/Photo paper/Movable self-adhesive vinyl/Pictorial cloth
Eco-solvent		Self-adhesive vinyl/Flex/One way vision/Coated banner/Flag cloth
Sublimation		Sublimation paper/Pure cotton
Special		Wallpaper/Canvas/Chinese art paper/Mesh
Printing resolution(dpi)		1440 dpi

213A, Sri Ayyappa Nagar, 6th Main Road, Chinmaya Nagar, Virugambakkam, Chennai - 600 092.
 Email :- elitetech2424@gmail.com, Web :- www.elitetechnologiesn.com,
 Phone :- 044 4384 8544
 Mob : 81244 70777 / 98436 52546

Cleaning of printhead		Automatic
Heating system		Front/Back
Speed	Draft mode	45 m ² /h
	Production	35 m ² /h
	Quality mode	25 m ² /h
Infrared		Infrared heating
Auto media take-up system		Equipped
Platform suction control		Equipped
Interface		Net cable
Working environment		15-30
Relative humidity(%)		40-60
RIP software		Photo Print Maintop/Photo Print
Operation system		WinXP/Win7
Voltage		AC220V/110V 50-60HZ
Power(W)		700
Fan		Equipped

Functions:

Advanced software functions of the wide format inkjet printing machine.

(1)high-efficient printing

1. rip while printing;
- 2.print selected area;
- 3.skip white in X and Y printing directions;
- 4.auto media sensor for setting print origin automatically(3 picture positions: left, middle and right).

(2)printing quality enhanced

1. two feather printing modes: moist, gradient;
- 2.simple printhead calibration mode can be easily mastered by operators;
- 3.micro adjustment of print head voltage.

(3)human-based functions

1. options of automatically sensing or manually setting media origin;
- 2.adjustable step value during printing;
- 3.operations both in computer interface and machine control panel;
- 4.automatic and constant ink system cleaning function.

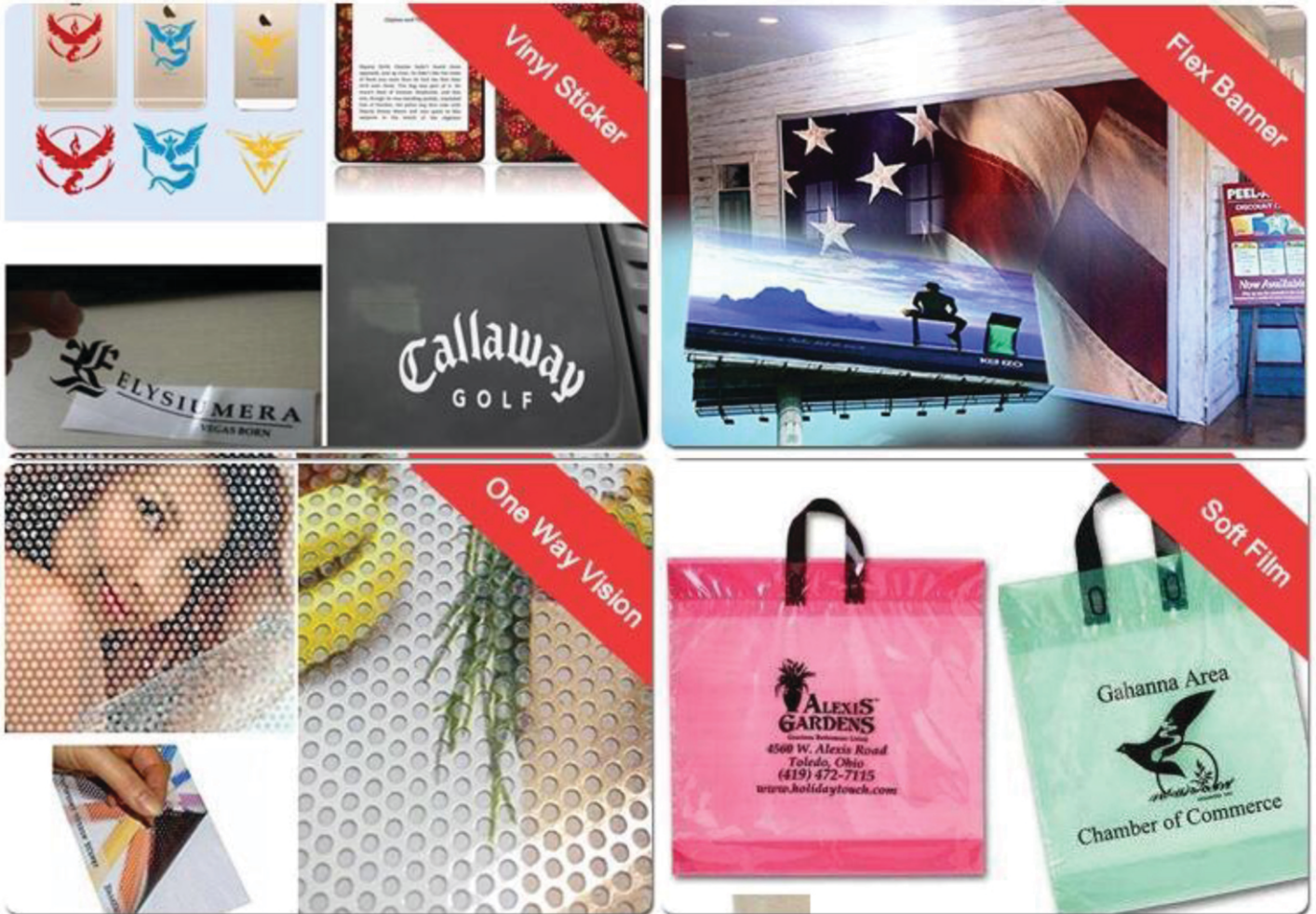
(4)ink saving function

1. options for single head cleansing or double heads cleansing;
- 2.options for light, medium and heavy print head sucking.

Details:



Samples pictures:



213A, Sri Ayyappa Nagar, 6th Main Road, Chinmaya Nagar, Virugambakkam, Chennai - 600 092.

Email :- elitetechn2424@gmail.com, Web :- www.elitetechnologiesn.com,

Phone :- 044 4384 8544

Mob : 81244 70777 / 98436 52546